

ClimaCheck

ClimaCheck onsite PA Pro III Portable Performance Analyser

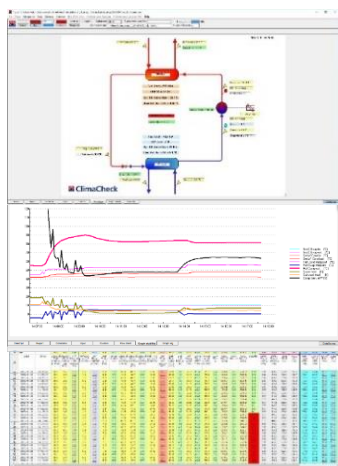
The future focus in air conditioning, refrigeration and heat pump plants will be efficiency.

ClimaCheck is the world leader in performance analysing in the RAC industry. We supply solutions for portable and permanently installed performance analysing used for inspections, energy audits, preventive maintenance, trouble shooting and cloud based 24/7 monitoring. ClimaCheck early warning capability for decreased efficiency or leaks is unique on the market.

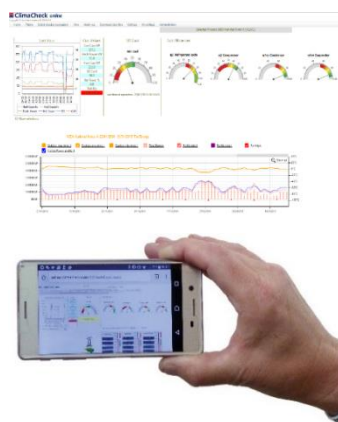
“To measure is to know”



Visualisation in onsite software



Visualisation in ClimaCheck online



ClimaCheck has selected the most advanced, powerful and flexible IoT platform on the market for our new generation of performance analysers. They have built in Penta Band modem, WiFi and ethernet communication. Data from all sensors are sent to local PC or to the cloud to analyse and visualise performance.

ClimaCheck is used by manufacturers of components, refrigerants and systems as well as consultants and service companies to ensure high performance in air conditioning, refrigeration and heat pump plants.

Tens of thousands of field measurements and thousands of online measurements with ClimaCheck prove that high rating does not ensure efficient operation in a plant. 20-30% of the energy can be saved in most plants through re-commissioning with ClimaCheck and most failures can be avoided if faults are identified before they cause damage. As 20% of global electricity is used by refrigeration processes – this is a huge saving potential – getting more in focus by authorities, utilities and users every day.

The new ClimaCheck PA Pro III is a turn-key portable analyser supplied with all required sensor for a standard refrigeration process. ClimaCheck onsite software is included and it can be connected to ClimaCheck online cloud servers by inserting a SIM card or through LAN/WiFi.

State of the art technology make the ClimaCheck PA Pro III ready for continued development with features such as Bluetooth and 1-wire “bus technology”. Modbus allows cost-effective expansion for complex system and integration with third party sensors/controllers. ClimaCheck customise systems at request and all systems can easily be updated when needed as they are modular and configurable. Updates and configuration can be done over internet to give flexibility and facilitates remote support.

Technical Specification PA Pro III Performance analyser		
Graphical display with touchscreen, Graphical 240x160 pixels White-on-Blue display, Digitized audio		
Penta-band cellular modem, UMTS/HSPA		
Inputs on main board:	4 x Analogue (0...10V or 4...20mA) Accuracy +- 0.5% FS	
Inputs digital	8 x Digital (wired to front)	
Output digital	8 x high-power solid-state digital (2 wired to front)	
Communication	Ethernet, WiFi, RS485x2, RS232x2, USB, Bluetooth classic/LE, CAN2.0B	
Analogue input module modbus	8 x inputs configurable Pt1000, 0-10 V, 4-20 mA, Accuracy: Temperature input± 0.25°C, Analogue ±0.1% FS	
1-wire bus	Temperature sensors -25 to 150°C (Accuracy -20 to 80°C +-0.5K)	
Memory	SD-card	
Supply voltage	24 VDC, 10 W, 24 W plug-in transformer included	
Dimensions/ Weight	501 x 279 x 193 mm/11 kg	
100 222		Complete ClimaCheck PA PRO III <150 A with integrated modem. Including software, cables and mounting kit. Including the following sensors: 8 x Pt1000 temperature sensors 2 x pressure sensors standard 10 and 35 Bar(g) 1 x 3 phase power meter EP Pro Scout with 3 x Current Clamps 0.5 -150A (hole diameter 25 mm/1")
100 232		Complete ClimaCheck PA PRO III <4000 A with integrated modem. Including the equipment and sensors as above but current clamps replaced with "rope type" CT: 3 x Rogowski coils 5-4000 A , (length 40 cm, 16")
900 168		Spare Part Case Attaches to PA Pro carry-on case retractable handle, Protective insulation in lid and bottom
Example of common accessories (request complete list):		Part No.
Power Scout - extra power meter for 2 circuit or cascade/booster systems		100 460
Clamp on, current transformer 0.5 - 150 A		400 610
Rogowski coils, current transformer 5-4000A		400 710
Magnet touch Voltage Probes, colour coded according to local market (specify colours)		400 26X
Pressure Sensor -0.7 - 5 Bar(g) Typical use is for R123 chillers		200 140
Pressure Sensor 0 - 10 Bar(g)		200 141
Pressure Sensor 0 - 35 Bar(g)		200 142
Pressure Sensor 0 - 50 bar (g) typical use R410A and MP for CO2		200 143
Pressure Sensor 0 - 150 bar (g) typical use HP for CO2		200 144
Expansion Module, eight temperature or analogue inputs configurable		500 603
Temperature sensor 5 m, 3.5 mm male plug		300 100
Temperature sensor 10 m, 3.5 mm male plug		300 225
1-wire sensor, 3 m cable, 3.5 mm male plug		300 101
Extension 1-wire 10 m with one male 3.5 mm "plug" to 3 female		300 116

Know the performance – maximise the efficiency.

ClimaCheck Sweden AB

Phone: +46(0)8-50 255 250

E-mail: info@climacheck.com Web: www.climacheck.com